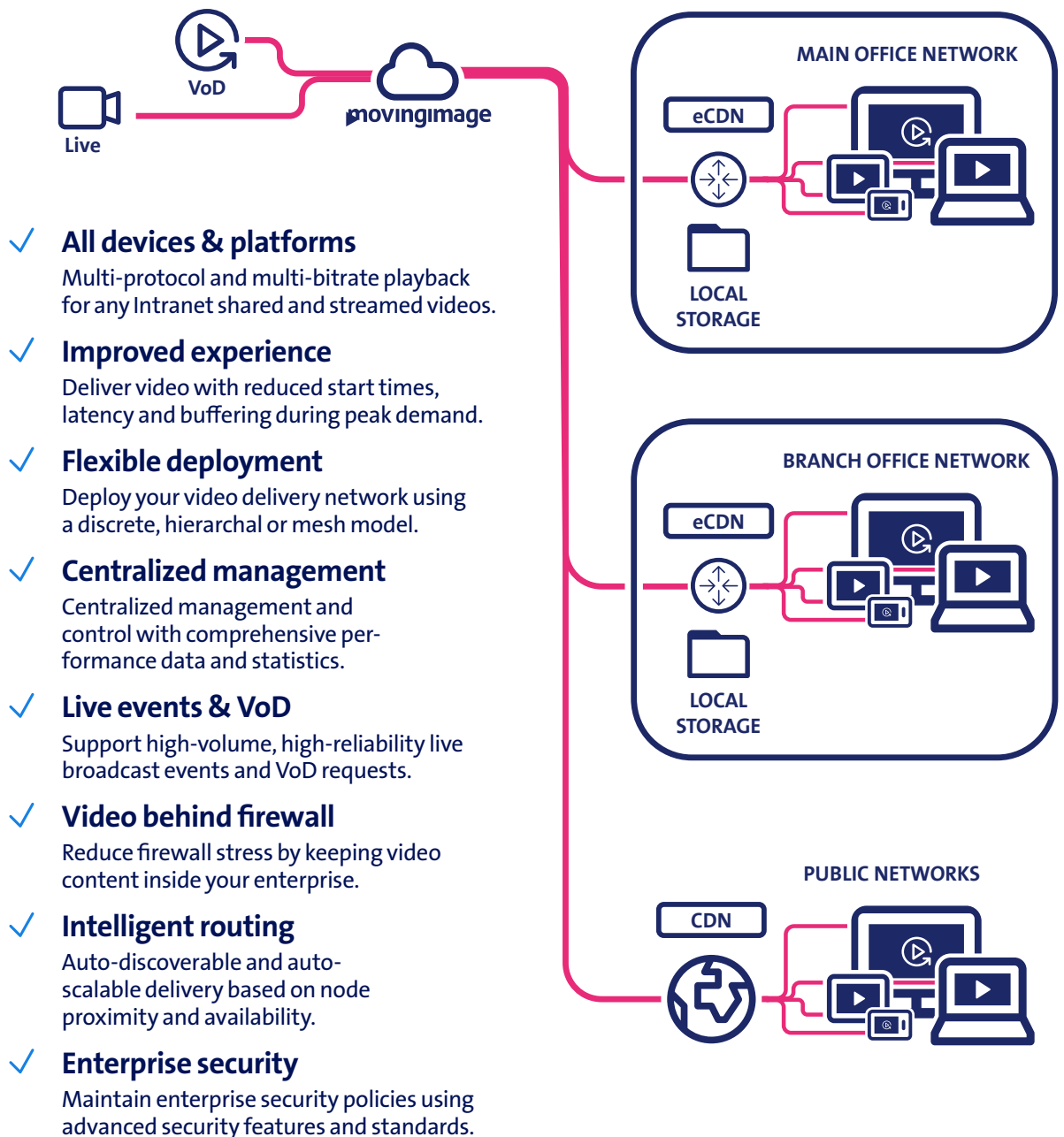




eCDN

Deliver your video content smoothly

Our Enterprise Content Delivery Network (eCDN) allows you to deliver live and on-demand video content securely through a single distribution point to anyone within the enterprise, anywhere, on any device. The easy-to-deploy eCDN overlays your existing network infrastructure and eliminates the need for expensive network upgrades. In combination with our centralized, comprehensive Enterprise Video Platform (EVP) you have the ultimate solution for enterprise-level communication.





General overview

The eCDN consists of robust video proxy caches that deliver enterprise video content with the lowest impact on internal network and security. Our delivery network improves video playback performance by reducing latency and buffering time. It also minimizes the amount of bandwidth required for delivering rich media content across the enterprise network.



Main features

- > Deployable on MS Windows or Linux | Docker, Kubernetes
- > Configurable as either Forward or Reverse HTTP Video Proxy
- > Content Encryption, in Transit and at Rest
- > Server-Linking for Dynamic Load Balancing
- > Network Traffic Offloading & Stream-Splitting
- > SSL and Token Protection
- > Directly compatible with Akamai® Media CDN
- > MPEG DASH, HLS, HDS, Smooth Streaming, Progressive Download

Technical requirements

Server Specifications

| | |
|---------------------------|--|
| Processing | min. 2 cores |
| Operating System | Linux 3.3.1 or later |
| Software | Microsoft Visual C++ 2010 x64 Microsoft Visual C++ 2010 x32 |
| Java | Java 8 or higher |
| Network Connection | Wired connection to internet access min. 1Gbit/s TCP port requirements (ports can be altered if desired): Port 10000 – Video traffic. Port 10080 – Admin. page. Port 11314 – Auto Discovery/Routing (if applicable) |

Server Sizing

| Size | Medium | Large |
|---------------------------|---|--|
| Concurrent Viewers | 300 (720p video) | 450 (720p video) |
| CPU cores | 4 cores (not counting hyper-threading) | 6 cores (not counting hyper-threading) |
| Memory | Min. 4 GB | Min. 8 GB |
| Disk Space | Recommended 30 GB of system storage and 200 GB of cache space (SSD recommended, magnetic is acceptable if high performance disks are used.) | At least 30 GB of system storage and 200 GB of cache (SSD recommended. If high performance magnetic must be used, then high speed RAID 0 is recommended) |

- > The eCDN has to be set up on servers provided in the customer's intranet infrastructure. It runs a Java based caching service.
- > Note that CPU cores in particular, as well as Disk Storage and network connection speeds, may limit the number of possible concurrent video requests.

Renowned customers use our solutions



swisscom

www.swisscom.com/evp
+41 58 221 76 21
digital.media@swisscom.com

Copyright © 2021 Swisscom Broadcast AG